

COLETO LAKE PROPERTY

21 +/- ACRES/COVE FRONTAGE

VICTORIA COUNTY
PROPERTY DESCRIPTION



Exceptional Waterfront Property

21 +/- Acre Property with approx. 400 ft. of Coletto Cove Water Frontage

Located off Weber Road, just 12 minutes east of Downtown Victoria, Texas.

This property has approx. 400 ft. of cove frontage, giving you direct access to the Coletto Creek Reservoir and endless recreational activities. Property terrain is mostly wooded with huge, mature oaks throughout.

Loaded with wildlife including whitetail deer, turkey, hogs and the occasional alligator, this property is sized for hunting and maintaining an Ag Exemption status.

Spend weekends fishing Coletto Lake! Included in the list price is access to the 50 acre Community GBRA area. This stunning acreage is only available to owners and has massive oaks, extensive water frontage, great views of the lake and plenty of open areas for recreational activities.

LIST PRICE \$334,000



BILLY MURPHY
FARM & RANCH REAL ESTATE
(361) 655-0484

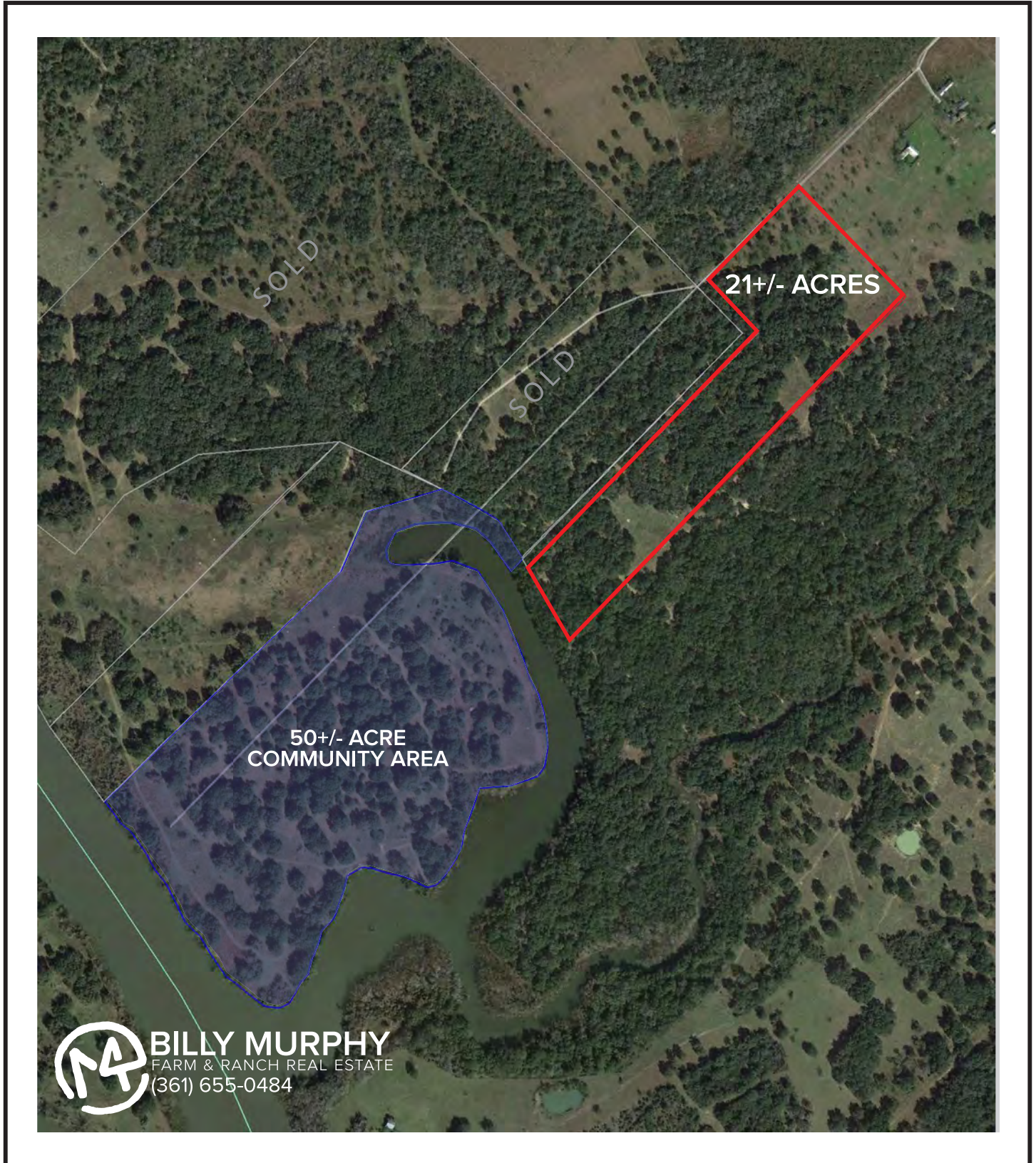
**COLDWELL
BANKER**
THE RON BROWN
COMPANY

M4RANCHREALESTATE.COM
BILLY.MURPHY@COLDWELLBANKER.COM

COLETO LAKE PROPERTY

21 +/- ACRES

VICTORIA COUNTY
PROPERTY AERIAL



COLETO LAKE PROPERTY

21 +/- ACRES

VICTORIA COUNTY
PROPERTY TOPO

