

# VALLE FRESCO RANCH

54+/- ACRES

DEWITT COUNTY  
PROPERTY DESCRIPTION



## 54+/- Acre Ranch in Goliad, Texas

**This ranch has it all – Excellent Location, Huge Live Oak Trees, Nice Home & Clean Pastures**

Located just north of Goliad near Weesatche, the Valle Fresco Ranch is accessed via paved Post Oak Road and features an automatic entrance gate.

The property includes a nice custom brick home built in 2005. The home features 5-Bedrooms with master down, 3.5-Baths, 2.5 car garage and a huge back patio.

Ranch terrain consists of gently rolling, open and clean pastureland with large live oak trees scattered throughout. Have fun fishing the catfish-stocked pond equipped with water level control and automatic fish feeder.

Ranch improvements include several storage sheds, a 40x40 metal storage barn with electricity and water and a good set of pens. Do not miss out on this turn key ranch. Seller will consider conveying some minerals with acceptable offer.

Property Directions:

From Goliad, head west on Hwy 59. Take a right on FM 1726. After 13 miles, turn right on Post Oak Road. Property entrance is 2.3 miles on the right.

**LIST PRICE \$695,000**



**BILLY MURPHY**  
FARM & RANCH REAL ESTATE  
(361) 655-0484

**COLDWELL  
BANKER**  
THE RON BROWN  
COMPANY

M4RANCHREALESTATE.COM  
BILLY.MURPHY@COLDWELLBANKER.COM


# VALLE FRESCO RANCH

54+/- ACRES

GOLIAD COUNTY  
PROPERTY AERIAL



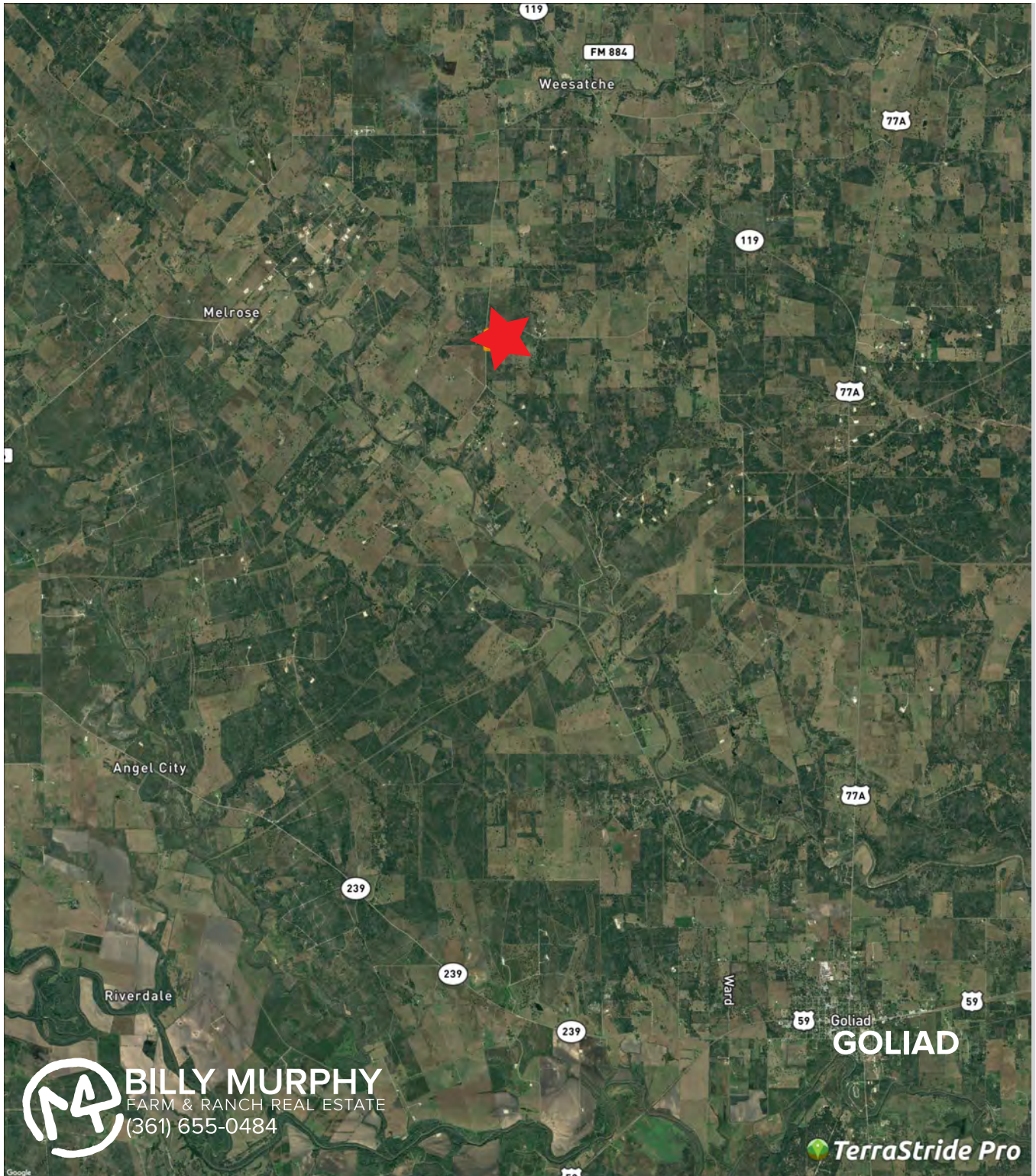
 **BILLY MURPHY**  
FARM & RANCH REAL ESTATE  
(361) 655-0484

 TerraStride Pro

# VALLE FRESCO RANCH

54+/- ACRES

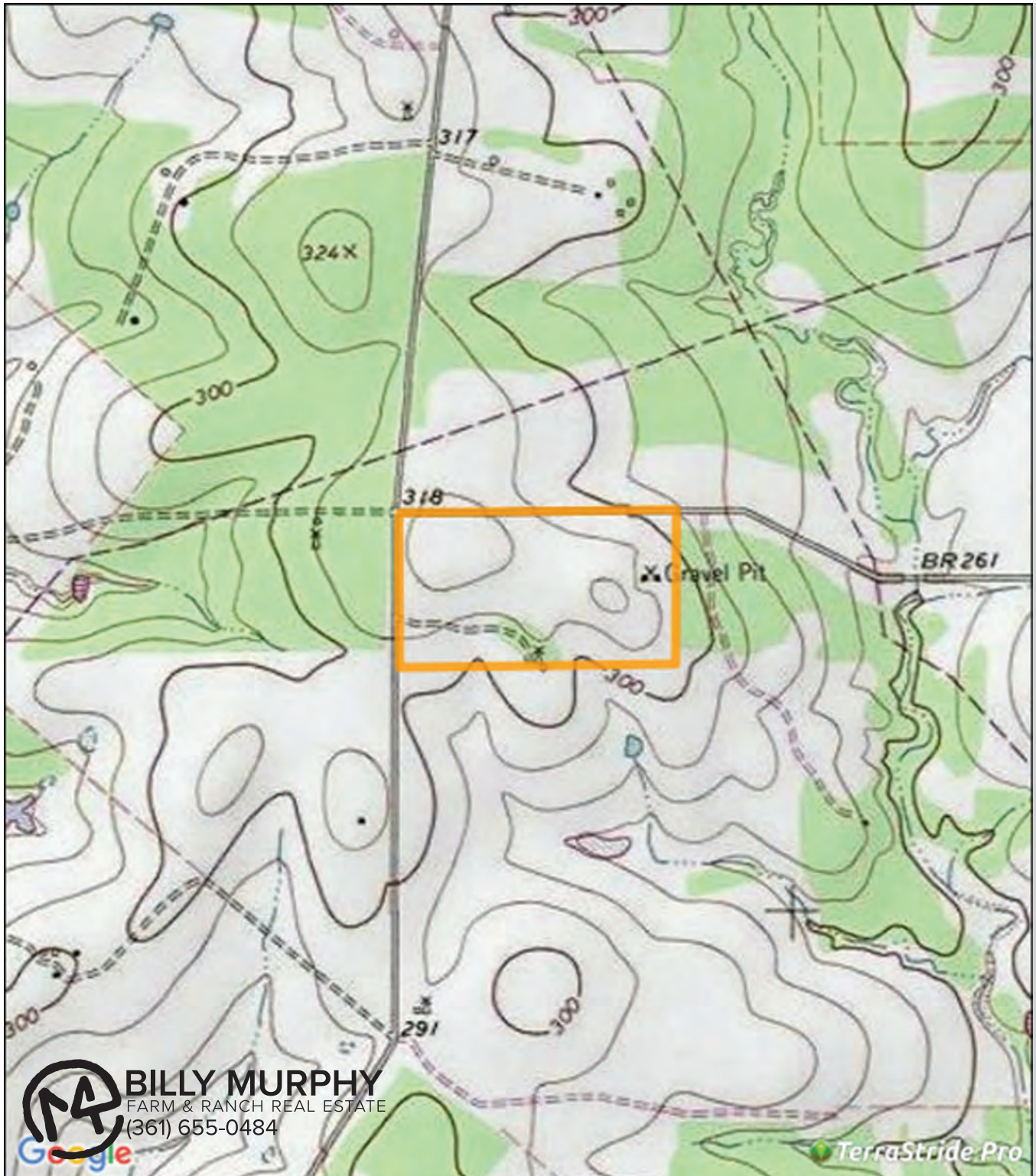
GOLIAD COUNTY  
PROPERTY LOCATION



# VALLE FRESCO RANCH

54+/- ACRES

GOLIAD COUNTY  
PROPERTY TOPO





United States  
Department of  
Agriculture

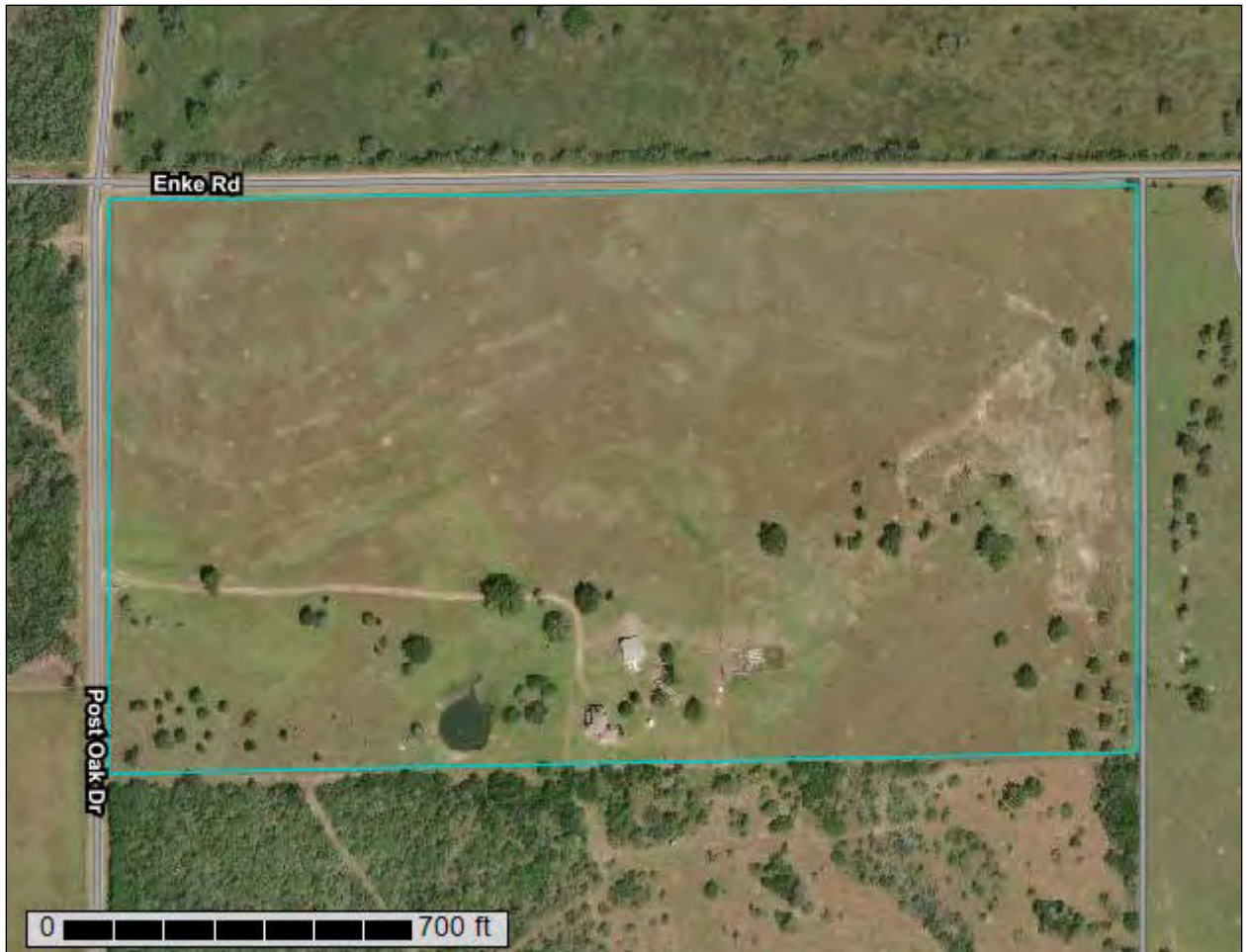
**NRCS**

Natural  
Resources  
Conservation  
Service

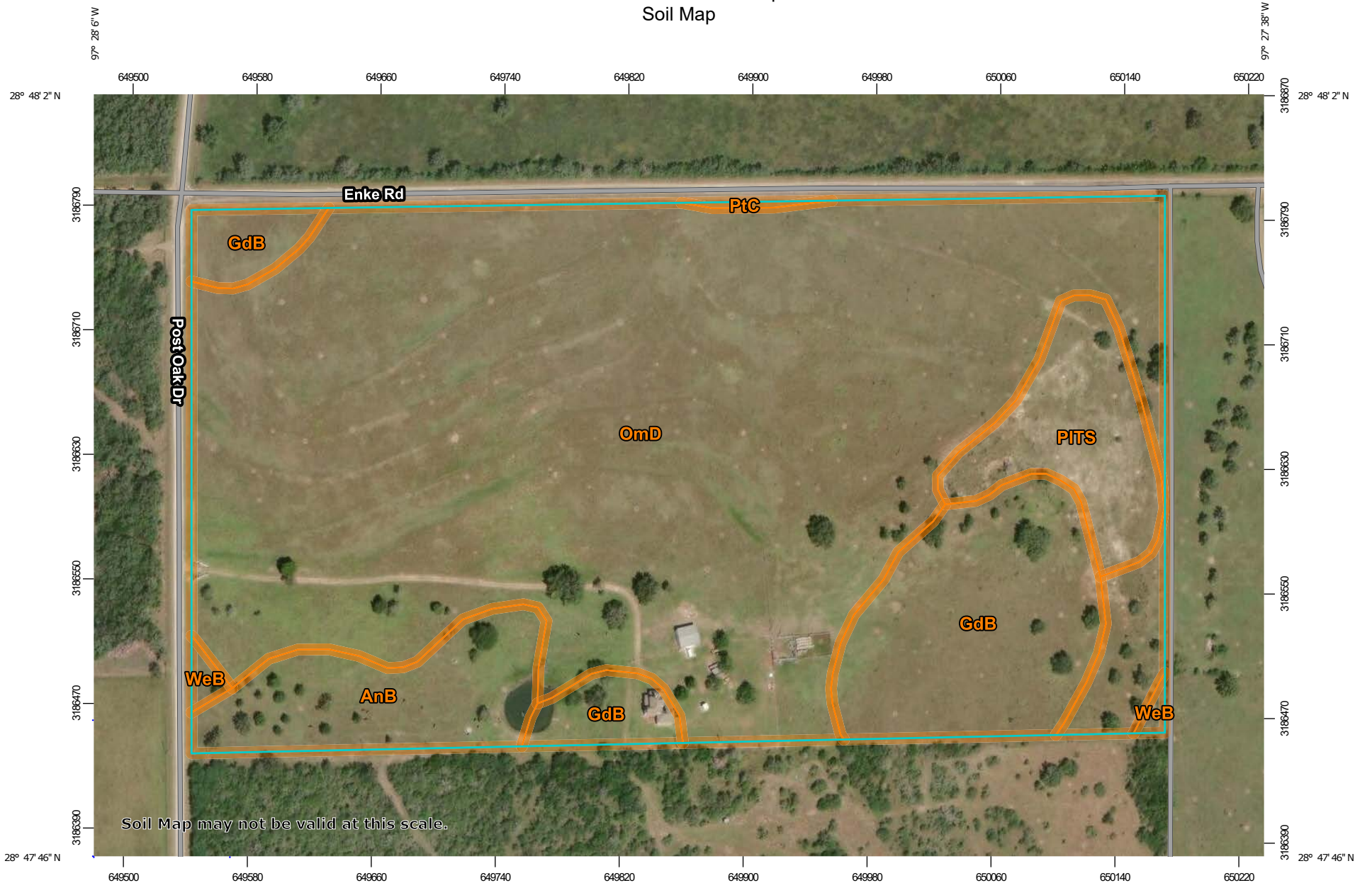
A product of the National  
Cooperative Soil Survey,  
a joint effort of the United  
States Department of  
Agriculture and other  
Federal agencies, State  
agencies including the  
Agricultural Experiment  
Stations, and local  
participants

# Custom Soil Resource Report for **Goliad County, Texas**

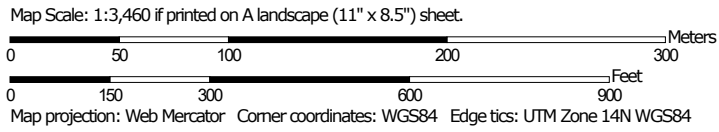
**M4 Ranch Real Estate**



# Custom Soil Resource Report Soil Map




Soil Map may not be valid at this scale.





### MAP LEGEND

**Area of Interest (AOI)**

 Area of Interest (AOI)




















**Soils**







 Soil Map Unit Polygons

 Soil Map Unit Lines


 Soil Map Unit Points

**Special Point Features**






-  Blowout
-  Borrow Pit
-  Clay Spot
-  Closed Depression
-  Gravel Pit
-  Gravelly Spot
-  Landfill
-  Lava Flow
-  Marsh or swamp
-  Mine or Quarry
-  Miscellaneous Water
-  Perennial Water
-  Rock Outcrop
-  Saline Spot
-  Sandy Spot
-  Severely Eroded Spot
-  Sinkhole
-  Slide or Slip
-  Sodic Spot

-  Spoil Area
-  Stony Spot
-  Very Stony Spot
-  Wet Spot
-  Other
-  Special Line Features


**Water Features**

 Streams and Canals

**Transportation**

-  Rails
-  Interstate Highways
-  US Routes
-  Major Roads
-  Local Roads

**Background**

 Aerial Photography

### MAP INFORMATION

The soil surveys that comprise your AOI were mapped at 1:24,000.

Warning: Soil Map may not be valid at this scale.

Enlargement of maps beyond the scale of mapping can cause misunderstanding of the detail of mapping and accuracy of soil line placement. The maps do not show the small areas of contrasting soils that could have been shown at a more detailed scale.

Please rely on the bar scale on each map sheet for map measurements.

Source of Map: Natural Resources Conservation Service  
 Web Soil Survey URL:  
 Coordinate System: Web Mercator (EPSG:3857)

Maps from the Web Soil Survey are based on the Web Mercator projection, which preserves direction and shape but distorts distance and area. A projection that preserves area, such as the Albers equal-area conic projection, should be used if more accurate calculations of distance or area are required.

This product is generated from the USDA-NRCS certified data as of the version date(s) listed below.

Soil Survey Area: Goliad County, Texas  
 Survey Area Data: Version 25, Sep 14, 2018

Soil map units are labeled (as space allows) for map scales 1:50,000 or larger.

Date(s) aerial images were photographed: May 28, 2010—Oct 17, 2017

The orthophoto or other base map on which the soil lines were compiled and digitized probably differs from the background imagery displayed on these maps. As a result, some minor shifting of map unit boundaries may be evident.

## Map Unit Legend

Map Unit Symbol	Map Unit Name	Acres in AOI	Percent of AOI
AnB	Ander fine sandy loam, 1 to 3 percent slopes	3.5	6.5%
GdB	Goliad fine sandy loam, 1 to 3 percent slopes	7.3	13.6%
OmD	Olmedo very gravelly loam, 1 to 8 percent slopes	39.8	73.6%
PITS	Pits	3.1	5.7%
PtC	Pernitas sandy clay loam, 2 to 5 percent slopes	0.1	0.1%
WeB	Weesatche sandy clay loam, 1 to 3 percent slopes	0.3	0.5%
<b>Totals for Area of Interest</b>		<b>54.1</b>	<b>100.0%</b>

## Map Unit Descriptions

The map units delineated on the detailed soil maps in a soil survey represent the soils or miscellaneous areas in the survey area. The map unit descriptions, along with the maps, can be used to determine the composition and properties of a unit.

A map unit delineation on a soil map represents an area dominated by one or more major kinds of soil or miscellaneous areas. A map unit is identified and named according to the taxonomic classification of the dominant soils. Within a taxonomic class there are precisely defined limits for the properties of the soils. On the landscape, however, the soils are natural phenomena, and they have the characteristic variability of all natural phenomena. Thus, the range of some observed properties may extend beyond the limits defined for a taxonomic class. Areas of soils of a single taxonomic class rarely, if ever, can be mapped without including areas of other taxonomic classes. Consequently, every map unit is made up of the soils or miscellaneous areas for which it is named and some minor components that belong to taxonomic classes other than those of the major soils.

Most minor soils have properties similar to those of the dominant soil or soils in the map unit, and thus they do not affect use and management. These are called noncontrasting, or similar, components. They may or may not be mentioned in a particular map unit description. Other minor components, however, have properties and behavioral characteristics divergent enough to affect use or to require different management. These are called contrasting, or dissimilar, components. They generally are in small areas and could not be mapped separately because of the scale used. Some small areas of strongly contrasting soils or miscellaneous areas are identified by a special symbol on the maps. If included in the database for a given area, the contrasting minor components are identified in the map unit descriptions along with some characteristics of each. A few areas of minor components may not have been observed, and consequently they are not mentioned in the descriptions, especially where the pattern was so complex that it